



**MORROW
PRESBYTERIAN
CHURCH**

Rev. Dr. John V. Callahan Jr
P. O. Box 316
6171 Huie Drive
Morrow, GA 30260

Phone: 770-961-5444
Fax: 770-960-0334

E-mail:
mpcpastor@bellsouth.net
mpcsecretary@bellsouth.net

"Reflecting Christ Together"

**We're on the Web! Visit us at
www.morrowpresbyterian.org**

Vacation Bible School—June 7—11, 2015



SAVE THE DATE!!

June 7—11, 2015

Kids will explore how to put their faith into action.

Kids will experience God's unstoppable love and discover how to fuel up and move in and through life with God.

Acts 17:28a, "In God we live, move, and exist."

A life with God is one of movement!

Maria Cruz will soon be hunting you down to enlist your help. Please help her by volunteering your services ahead of time. She will need actors, teachers, leaders, and other helpers.



Volume 8, Issue 2

February 2015

PRAY + FAST + GIVE =
LENT +

MORROW PRESBYTERIAN CHURCH

**Morrow Presbyterian
Herald**

The Pastor's Pen



Valentine's Day is the major holiday of the month. Cards, flowers, and chocolates are bought on the day for that special loved one who may set a person's heart on fire. According to the U.S. Greeting Card Association, an estimated 190 million valentines are sent each year. Half of those valentines are given to family members other than husbands or wives, usually to children.

This year Lent starts toward the end of February, which is a time of reflection and repentance. Ash Wednesday itself is determined by when Easter will occur, which is always the first Sunday after the first full moon that rises after the first day of spring. Then you count backwards 40 days without including Sundays. Sounds confusing? Needless to say it happens every year, and we might give up chocolates as a way to observe the season. We might give up other sweets or habits, or refrain from negative attitudes and short tempers.

We probably separate Valentine's Day and Lent in our minds, because one holiday is secular and the other religious. Only lasts a day and the other a month and a half. But do we consider how both Valentine's Day and Lent fit together? Do we think about God's gift of love to us?

God's gift of love didn't come in the form of cards, flowers, or chocolates. He came in the form of a Son. God's gift didn't show His love by asking us out to dinner or buying us a special present. God showed His love by having His Son suffer, die, and rise. God's Valentine's gift doesn't last a week or two like chocolates or roses. Christ is our salvation and lasts forever.

As you think about love this month, think about God's love for you. As you think about how special you can make the day for the person who makes your heart pitter-patter, think how God's heart burns for you and how God wants to make our lives complete. What can we do for our Loved One this holy season? How may we show appreciation for God's great mercy and grace, now and always?

"For God so loved the world that he gave his one and only Son, that whoever believes in him shall not perish but have eternal life. For God did not send his Son into the world to condemn the world but to save the world through him" (John 3:16-17).

"Very rarely will anyone die for a righteous person, though for a good person someone might possibly dare to die. But God demonstrates his own love for us in this: while we were still sinners, Christ died for us" (Romans 5:7-8).

Peace in Christ,

Rev. Dr. John

¹http://en.wikipedia.org/wiki/Valentine%27s_Day.

Prayer Requests

PRAYING FOR OUR MEMBERS, FAMILIES, & FRIENDS Family of Michael Thraikill (Bill's brother), Family of Meg Gore (Robert & Sara Gore's niece), Tanya Costa, Betty Janes, Velma Miller, (Bud Chapman's sister), Gordon & Shirley Richardson, Willie Sharpe, Isabel Sierra, Jennifer Barber, Ruth Batchelor, Trina Berry, Carol Bevil, Jo Bevil, Esther Bland, Allie Brandon, Mary Bridges, Allene Brown, Dr. Todd Bruno, Vanessa Buck, Windle Byars, Marcia Cartledge, Cathy Chambers, Betty Colwell, Bob Eskew, Sherrie Esquivel, Will Felt, Connie Funk, Jessica Giddens, Penny Gordon, Allen Grant, David Hadler, Bob & Gail Hardy, Erin Harkens, Beth Harper, James Harvey, Steve Hayner, John Henrickson, Rev. Penny Hill, Jeannie Hodges, Laura Johnson, George Kempson, Vickie Loper, Noli Luna, Marcia McCord, Julia McLeod, David & Faye Moss, Anne Nixon, Nan Norton, Nuss Family, Breanna Ordaniel, Shanti Paramanandam, Beverly Pruet, Chuck Reed, Allene Rowland, John Sandberg, Epetacio Sebilis, Joe & Betty Spier, Keith Stanley, Carolyn Sterns, Margaret Strelsky, Ann Thornton, Morse UpDegraff, Eddy Wheeler, Barbara Whitfield, Terry & Margie Williams. **OUR MISSIONARIES:** Rev. Al **Tinio** & family in the Philippines; Dan & Elizabeth **Turk** - Madagascar. **OUR MILITARY:** Scott **Bland** - Navy, Virginia; Shaun **Bland** - Navy, Georgia; SPC Kevin & Jaime **Brown**—Army—Fort Riley, KS; Jeremy **Butler** - Marines; Sk2 Robert **Crain**, Tennessee; SPC Joseph **Eason**, Fort Bliss, TX; Jonathan **Johnson** - National Guard - GA; Kevin **Krebs**, AK; SSG Richard **Venizelos** - Air Force, CO.; SPC Justin **Warlick** - Army, TX.

Sanctuary Flowers

The **2015 Flower Calendar** is available. Every date in February is currently available. If you would like to put flowers in the sanctuary, the flower calendar is on the library window. You may put the flowers in honor or in memory of a loved one or for a special occasion. You will be billed directly by Morrow Florist.

New Member Class—Feb 28

New Member Class - February 28, 9 a.m. - 12 noon. If you would like to join Morrow Presbyterian Church, please sign up for the new member class that Pastor John will teach on February 28. Sign-up sheet in narthex.

Ash Wednesday, February 18

Lenten Prayer Vigil, February 18, 6 a.m. - 6 p.m. We will begin the Lenten season with a 12-hour prayer vigil. The sanctuary will be open for prayer. The congregation is invited to sign up for 30-minute or 1-hour time periods. Devotion materials and a prayer list will be available. You are asked to remain in the sanctuary until the next person enters for his/her time slot. **Ash Wednesday Service, February 18 at 7:00 p.m.** We will serve communion at this time.

2014 Giving Statements

Your 2014 Giving Statements are available. They are on a table in the narthex. If you do not see your name, please check with Dianne Hooten.

February FNS—Feb. 15, 6 p.m.

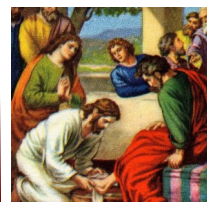
Valentine's Family Night Supper February 15, 6 p.m. Please come to our Valentine's Family Night Supper on February 15, 2015 at 6 pm. Wear red, white, or pink and bring your favorite Valentine main dish and your best Valentine's Theme dessert or favorite Valentine candy to share.

Elder Ordination / Installation

Our newest elders, Class of 2017, were ordained/installed on January 4, 2015. (l-r Ray West, Ruth Laster, Dock Gammage, Ugo Chukwura, David Turner.)



Youth Winter Retreat



Winter Youth Retreat - February 20-21. The Youth will meet at the Gammage home on Friday, February 20 at 6 p.m. for a weekend retreat. The theme is **"How Can I Be a Disciple Today?"** The retreat will conclude on Saturday evening, February 21 at 10 p.m. Make your plans now to attend.

Scout Sunday—February 8

Scout Sunday - February 8. Scout Sunday will be on Sunday, February 8. All Scouts in our church family are invited to be part of the service. If you would like to participate, please contact Twarna Johnson or David Turner. A reception will follow the worship service.

Young at Heart—February 25

YAH The Young at Heart will have their next outing on Wednesday, February 25, 2015. The specifics have not yet been finalized. More information will be shared when the details are completed.

Presbyterian Women

PWCT—February 8, 12:30 p.m. The PWCT will meet in the Pacer's classroom. Anne Fordham will lead the meeting. Maria Cruz has the devotion. The group will enjoy the refreshments that the Scouts are providing before their meeting.

Virginia Dews Circle, February 9, 6:30 p.m. The Virginia Dews Circle will meet at the church in the Pacers Classroom on February 9, 2015 at 6:30 p.m. They will continue the study of Women of the Bible. Hostesses will be Anne Fordham and Shirley Thraikill. Anne Fordham will have the devotion. Their project for February will be donations for Heifer International.

Dorcas Circle—February 10, 10 a.m. The Dorcas Circle will meet in the Fellowship Hall. Suzanne Lukat will lead the Bible study—James, Chapter 3. Hostesses are Lucie Cantrell, Brenda Garner, and Inez Coke. Marilyn Mitchell has the devotion.

Morning Glory Circle—February 22, 9:45 a.m. The Morning Glory Circle will continue in their Bible study using the book, *"The Best Yes,"* by Lysa TerKeurst. They will be discussing Session 3, Chapters 7—9.

Giving Online to MPC Made Easy

There are many ways to donate money to our wonderful church, including over the Internet. If you like to do your banking online, you can set up Morrow Church as a payee. Your tithe will be mailed directly from your account to our church post office box easily and securely.

Here's how to do it:

Log in to your account and find the tab that directs you to Payees (it might say Bill Pay).

Add a new payee to your list, typing "Morrow Presbyterian Church" manually.

Enter the address which is "6171 Huie Drive, PO Box 316, Morrow, GA 30260" in the appropriate boxes.

Enter the church phone number as 770-961-5444, and tell your bank that you don't have an account number (you would normally enter an account number, if you pay utility and insurance bills).

Click the icon that tells you to save the information, and you are finished!



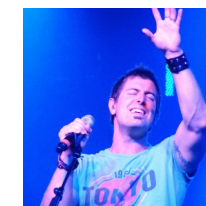
You may donate monies every time you visit your bank account online, or you may set up a regular weekly or monthly tithe that sends Morrow Church donations automatically. In either case, monies go directly from your account to us with speed and without fees. We receive 100% of what you send.

Winter Jam 2015

Georgia Dome
Saturday, February 7, 2015
6:00 p.m.— Doors open at 5 p.m.
\$10 at the door

- Skillet
- Jeremy Camp
- Francesca Battistelli
- Building 429
- For King and Country
- Newsong
- Family Force 5 and more

The Youth will meet at the church on Saturday, February 7, at 4 p.m. to carpool to the concert.



Spivey Hall Concerts

Jesica West is part of the Spivey Education team at Clayton State University. She is wanting MPC to know about the Spivey Hall Young People's Concerts. Concerts are only \$2 a ticket beforehand and \$5 at the door the day of the concert.

Wednesday, **Feb 4**, 2015, 11:15 a.m. - Atlanta Flute Ensemble

Thursday, **Feb 5**, 2015, 11:15 a.m.—Berry College Singers

Friday, **Mar 6**, 2015, 11:15 a.m. Columbus State University Percussion Ensemble

Wednesday, **Mar 11**, 2015, 9:45 a.m. & 11:15 a.m.—Moira Nelligan and the Dixie Jigs (Celtic Group)

Thursday, **Mar 26**, 2015, 11:15 a.m.—CSU Dance Ensemble

You can pull up information on these concerts and more at www.spiveyhall.org.